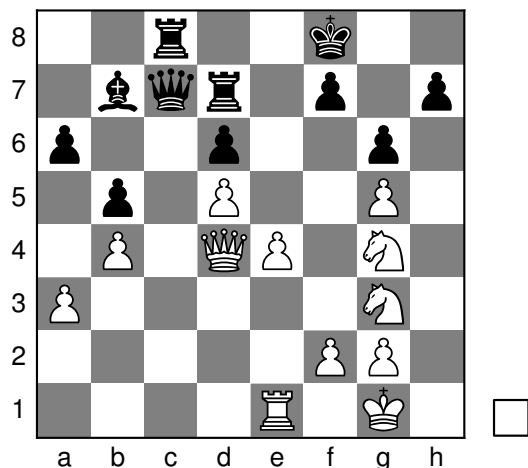


Solution to the combinational exercises

(published on the homepage of the 8th Winterthur Chess Week 2008)

DAVID HOWELL (ELO 2527) —
 KRZYSZTOF BULSKI (ELO 2421)
Wch U20 Jerevan 2007

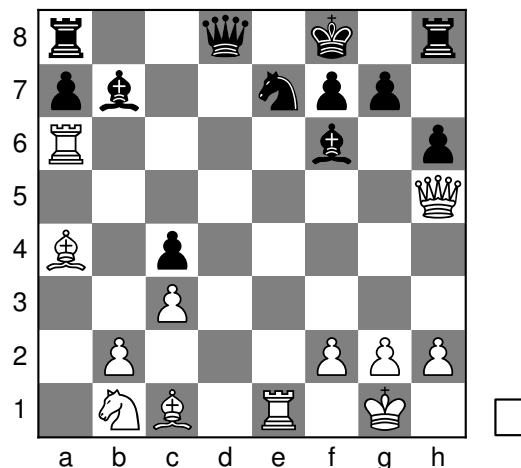


In the game, the 20-year-old Pole KRZYSZTOF BULSKI resigned after the moves

1. ♖h8+ ♔e7 2. ♘f5+!

as he cannot prevent the mate after 2...gf:
 3. ef:♯. □

DAVID HOWELL (ELO 2471) —
 VLADIMIR LAZAREV (ELO 2522)
French chT 2006



The grandmaster VLADIMIR LAZAREV, defending with black here, is a frequent guest in the Swiss team championships, as well, but here we see a position from a team competition in his adopted country, France.

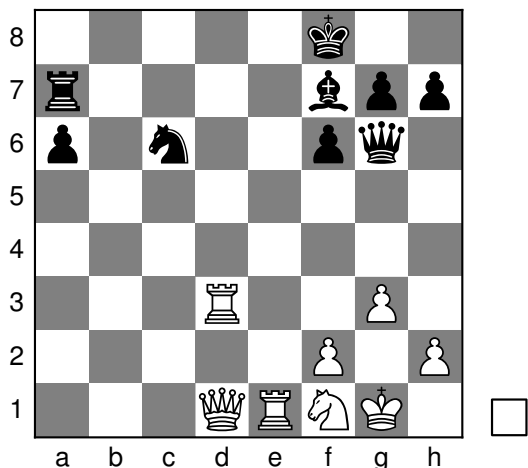
1. ♜f6! gf: 2. ♙h6+ ♔g8

Returning the extra exchange with 2... ♜h6: does not relieve the pressure — also after 3. ♖h6+ ♔g8 4. ♙c2 white gets mated soon.

3. ♜e7:!

and black resigned in view of the variation
 3... ♖e7: 4. ♖g4+ ♔h7 5. ♖g7♯. □

DAVID HOWELL (ELO 2348) —
 DAVID EGGLESTONE (ELO 2159)
Jersey op 2005



Due to his extra exchange, 15-year-old DAVID HOWELL has a winning advantage in this position, of course. After » technical « moves like 1.♖d7 ♜d7: 2.♚d7: ♗e8 black can defend for a while and white still has some work to do. HOWELL finds a tactical solution:

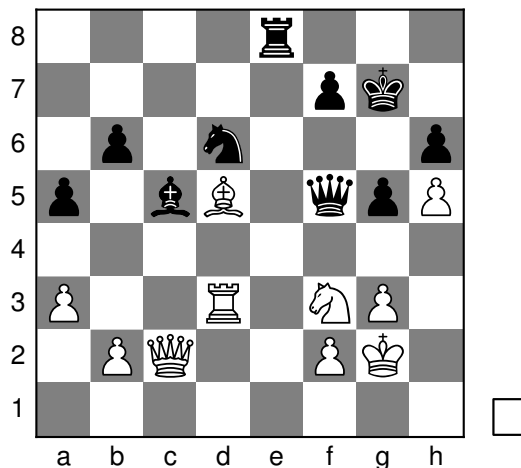
1.♖d8+! ♜d8:

The move 1... ♗e8 is followed by 2.♖ee8:+ ♚e8: 3.♚d6+! ♜e7 (3... ♜e7 4.♖e8:+ ♚e8: 5.♚b8+ +-) 4.♖e8:+ ♚e8: 5.♚c6:+.

2.♚d6+ ♚g8 3.♚d8:+ ♗e8 4.♖e8:+ ♚f7 5.♖e1

Facing the mate on e8, DAVID EGGLESTONE resigned. □

DAVID HOWELL (ELO 2519) —
 KETEVAN ARAKHAMIA-GRANT (ELO 2418)
GBR ch 2007



The black bishop has no secure square to retreat in the case of an attack. White can take advantage of this fact by means of a combination, as after

1.b4! ab: 2.ab:

black cannot take the pawn on b4: 2... ♗b4: 3.♚b2+ ♚h7 4.♚b4: ♚d3: 5.♚d6: and in view of the weekend position of black's king, white will quickly convert the advantage of the two pieces upon the rook, for instance after 5... b5 6.♜e5+- oder 5... ♖e6 6.♚d7+-

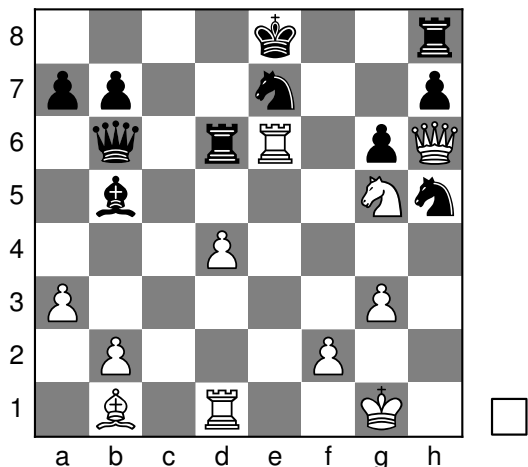
In the game followed the more stubborn

2... ♗f2: 3.♗c6! ♖e6

after which 4.♗d7! would have lead to a winning position for white¹, although he still has to find some precise moves, e.g. 4... g4 5.♚c3+ ♚f6!? 6.♗e6: ♚c3: 7.♖c3: gf:+8.♚f3: ♗e1!? 9.♖b3 fe: 10.♚e2! +- □

¹In the game, HOWELL played the slightly imprecise move 4.♚c3+?!, where the white queen is tactically weak: as a consequence, after 4... ♚g8 the move 5.♗d7 would not be so clear anymore, because of 5... ♗g3!: 6.♗e6: (6.♚f2:?? ♜e4+ shows the inconvenient position of white's queen) 6... fe: In this position black has two pawns for the exchange and white's kind is far from being safe. HOWELL played the better move 5.g4 (instead of 5.♗d7) and could eventually win the game (although black had some drawing chances).

DAVID HOWELL (ELO 2348) —
 CRAIG PRITCHETT (ELO 2258)
 EU-union ch Cork 2005

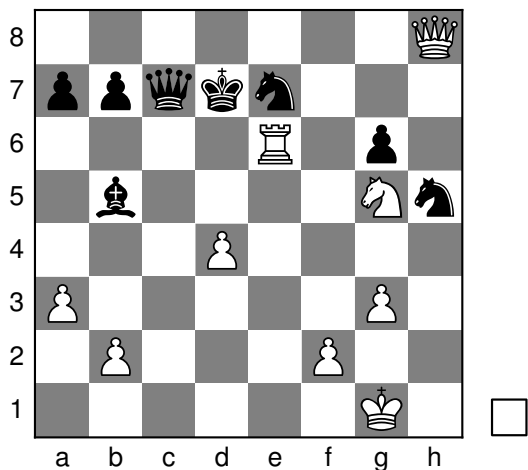


The position of the black king in the centre together with the actively placed white pieces allowed for a nice combination:

1. ♖g6+! hg:

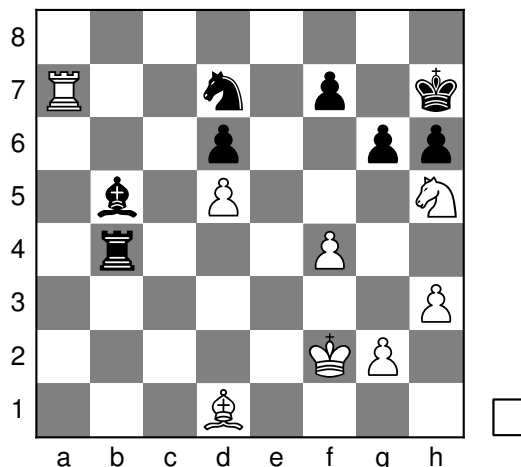
On 1... ♔d7 2. ♗h5: ♜e6: 3. ♗g4+-, white regains the sacrificed material — and more.

2. ♜h8:+ ♔d7 3. ♜de1! ♜e6: 4. ♜e6: ♜c7



5. ♜e7:+! ♔e7: 6. ♜h7+ ♔d6 7. ♜g6:+ ♔d5
 8. ♜e4+ ♔d6 (8... ♔c4 9. ♜c2+ winning the queen) 9. ♜e6#

DAVID HOWELL (ELO 2486) —
 JEAN PIERRE BOUDRE (ELO 2336)
 FRA chT 2006



Before JEAN PIERRE BOUDRE played the move 1... g6?, he probably only checked, that the »standard combination« 2. ♜d7:? ♗d7 3. ♗f6+ ♔g7 4. ♗d7: does not work due to 4... ♜f4:+ 5. ♔e3 ♜b4! followed by f5, ♜b7 and ♔g7-f7-e7. He has not seen, however, that his opponent has another tactical shot at his disposal. The game continued

2. ♗f6+! ♗f6: 3. ♜f7:+ ♔g8 4. ♜f6: ♔g7 5. ♜d6: ♜f4:+ 6. ♔e3

with a technically winning position for white. HOWELL won after nine more moves:

6... ♜f6 7. ♜d8 ♜a6 8. ♗f3 ♔f6 9. ♜e8 ♗d7
 10. ♔d4 ♔e7 11. ♔e5 ♜f6 12. ♗e4 g5 13. ♜h8
 ♜a6 14. d6+ ♔f7 15. ♜h7+ 1-0